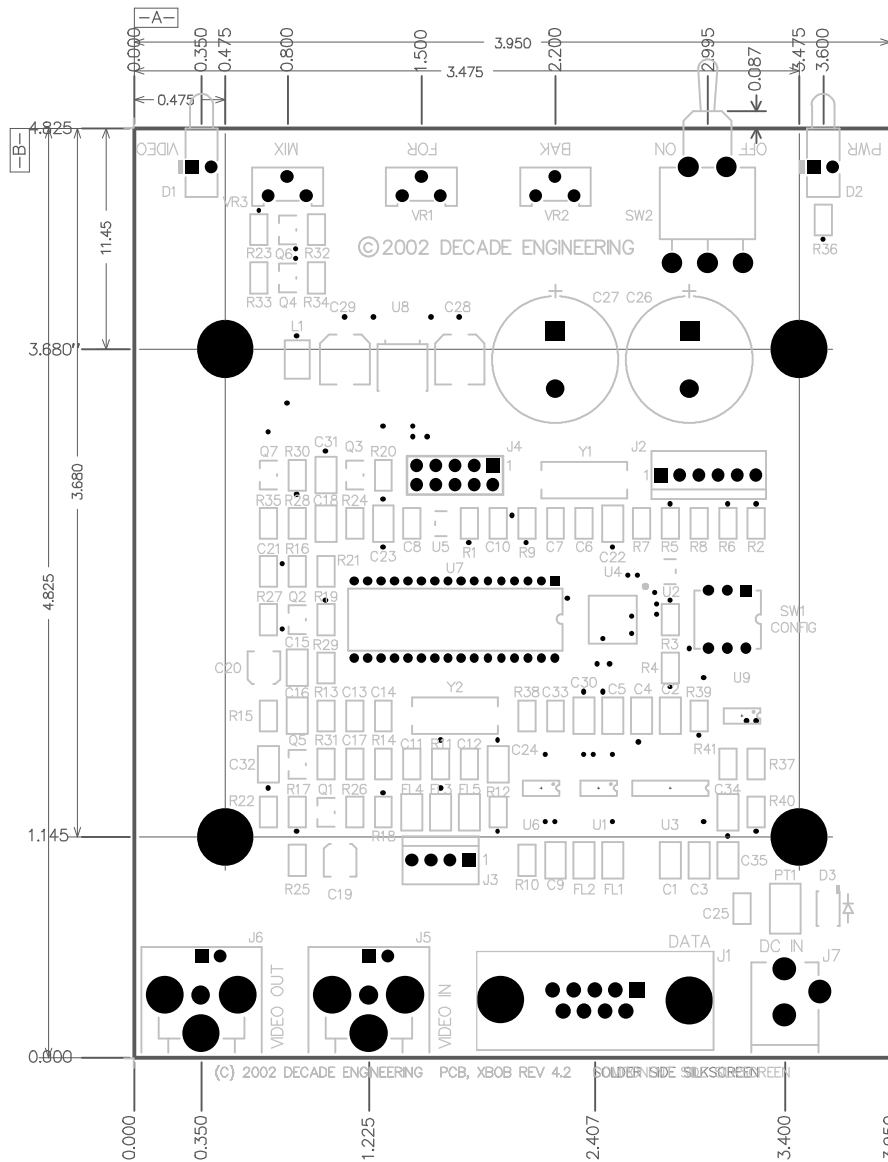


(C) 2002 DECADE ENGINEERING
 5504 VALVIEW DR. SE
 TURNER, OR. 97392-9517
 503-743-3194
 28 OCTOBER 2002
 PCB, XBOB REV 4.2

COMPONENT SIDE VIEW



NOTES: UNLESS OTHERWISE SPECIFIED:

1. ALL DIMENSIONS ARE IN INCHES.
2. MATERIAL : .062 FR4 LAMINATE, 1 oz. COPPER CLAD BOTH SIDES, NEMA GRADE, U.L. APPROVED.
3. ALL HOLES SHALL BE $\text{⊕} \text{⊘} .010 \text{ } \begin{matrix} A \\ B \end{matrix}$.
4. MINIMUM ANNULAR RING = .002.
5. ALL HOLES ARE PLATED THROUGH. HOLE SIZES SHOWN ARE FINISHED SIZE. TOLERANCE SHALL BE +/- .003.
6. PLATING: WALLS OF PLATED THROUGH HOLES SHALL BE COPPER PLATED .0011 THICK MINIMUM. WALLS OF PLATED THROUGH HOLES AND ALL EXPOSED COPPER AREAS SHALL BE PLATED .0003 MINIMUM THICKNESS 60/40 SN/PB. VOIDS ARE NOT TO EXCEED 10% OF THE TOTAL WALL AREA.
7. SELECTIVELY PLATE .000050 MIN GOLD OVER .0003 MIN NICKEL.
8. CONDUCTOR WIDTH AND SPACING TO BE WITHIN 10% OF THE MASTERS. 0.010 SPACES AND TRACES.
9. BOW AND TWIST SHALL NOT EXCEED 10% WITH A MAXIMUM OF .020" OVER ENTIRE SURFACE.
10. SOLDERMASK TO BE WITHIN .010 TRUE POSITION. SMOBC LPI GLOSSY BOTH SIDES. COLOR GREEN.
11. SILKSCREEN TO BE WHITE, NON-CONDUCTIVE EPOXY INK.
12. VENDOR MARKING IN INK ON BOTTOM LAYER.
13. INSPECTION QUALITY LEVEL PER IPC-A-600D.
14. PACKAGE FINISHED BOARDS TO INSURE FREEDOM FROM CONTAMINATION, SCRATCHES AND MECHANICAL STRESS.